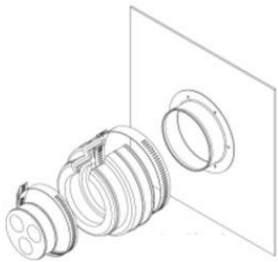


## Aluminum Cable Entry Plate 1 Port Part # CE-1X1



Aluminum cable entry plate is used on wall and roof installations, it enables multiple coax runs to enter buildings and shelters. Entry plates support coax at the entry point and prevent moisture from entering the building. Entry plates are manufactured from aluminum and are powder coated finish to ensure long term integrity.



Material	Entry Plate	Aluminum
	Mounting Hardware	Stainless steel 304
Number of Ports	1	
Port Layout	1 x 1	
Wall Opening	4" x 4"	
Overall Size	7" x 7"	
Package	1 pcs / box	